



Addison Close, Thetford, Norfolk, IP26 4DJ

Rent - Offers Over £220,000 Deposit -

Nestled in the charming village of Feltwell, Addison Close presents a delightful opportunity to acquire a semi-detached bungalow that exudes character and warmth. This older-style property boasts two well-proportioned bedrooms, making it an ideal choice for couples, small families, or those seeking a comfortable retirement home.

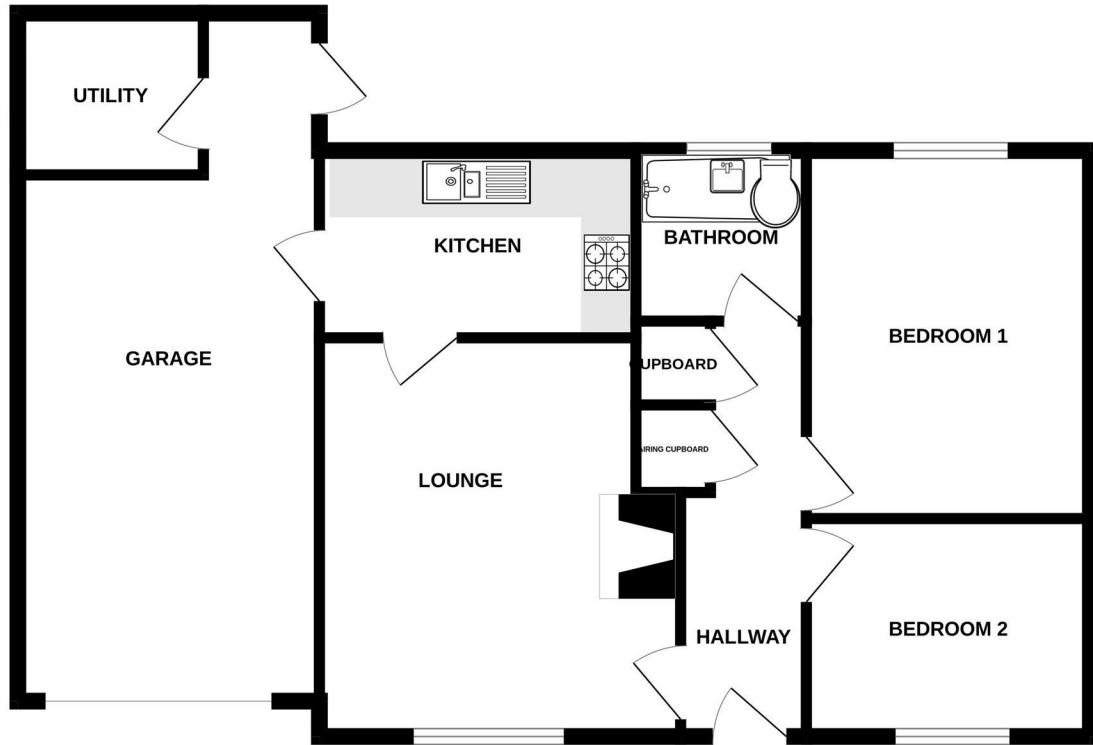
The bungalow's layout is designed for ease of living, with a focus on practicality and comfort. Although the property spans a modest footprint, it offers a welcoming atmosphere that invites you to make it your own. The

- 2 COSY BEDROOMS
- OLDER STYLE CHARM
- QUIET ADDISON CLOSE
- EASY ACCESS TO TRANSPORT
- IDEAL FOR DOWNSIZING
- SEMI-DETACHED BUNGALOW
- LOVELY GARDEN SPACE
- NEAR LOCAL AMENITIES
- PERFECT FOR SMALL FAMILIES
- VIEWING RECOMMENDED



Council Tax Band: A - EPC Rating: D 55

GROUND FLOOR



Whilst every attempt has been made to ensure the accuracy of the floorplan contained here, measurements of doors, windows, rooms and any other items are approximate and no responsibility is taken for any error, omission or mis-statement. This plan is for illustrative purposes only and should be used as such by any prospective purchaser. The services, systems and appliances shown have not been tested and no guarantee as to their operability or efficiency can be given.
Made with Metropix ©2025.

